

Ropeland Way Case Study





**ROBINIA TIMBER SUPPLIERS &
PLAY EQUIPMENT MANUFACTURER**



The Cart House
Goldrings Farm
Elsted Marsh
Midhurst
West Sussex
GU29 0JS
T: 0845
F: 01730 815872
E: enquiry@dylangroup.co.uk

Case Study Title: Play Area Improvements at Ropeland Way, Horsham, for Horsham DC

Client: Deborah Mallard (Projects Officer)

- Horsham District Council - Parkside, Chart Way, Horsham, West Sussex. RH12 1RL

Location: The Play Area, Ropeland Way, Horsham, West Sussex. RH12 5NZ

Budget: £25k

Description:

A carved owl keeps watch over the play area at Ropeland Way which has undergone a fun transformation into an 'enchanted forest'.

The play area, located within a housing estate in North Horsham provides imaginative play opportunities for families with young children.

Specifically designed for 1-8 year old children, new play equipment includes a see-saw, swings and a special 'tree house' with slide & climbing units. Following a leaf and paw print trail leads to a discovery of forest animals and insects, and giant mushrooms, along the way, provide resting places under the canopy of an enchanted tree.

Playsafe Playgrounds successfully tendered and was awarded the contract for the project with their proposal of individually designed Hardwood Robinia Timber Play Equipment (BS EN 1176 Standard) and bespoke hardwood fencing.

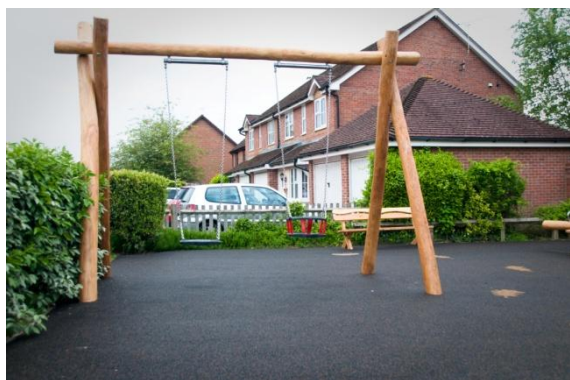
The Playsafe Playgrounds Equipment included:

- Single Robinia Timber Tower Unit with the following features - stainless steel slide, stainless steel fireman's pole, climbing wall with coloured preformed climbing, coloured steel core rope inclined access net, hand carved stained owl
- Robinia Timber Cradle & Flat Seat Swing
- Robinia Timber Spring Seesaw
- Robinia Timber Hardwood Bench
- Hand carved hardwood mushrooms

The rubber surfacing used for the project was black wet pour with a brown fleck (BS EN 1177) safety surfacing. This included painted graphics onto the rubber surfacing that featured a hedgehog, deer and leaves.

The Play Equipment for the project was manufactured by the Dylan Group and fabricated in their workshops in West Sussex by a professional team of highly skilled craftsmen using hardwood timber (specially selected and graded Robinia Timber from Eastern Europe) complete with Stainless Steel fixings and fittings.

On completion, the pre-assembled play equipment was delivered directly to site and installed by the Playsafe Playgrounds installation team.





Client Comments:

Deborah Mallard (Projects Officer) Horsham District Council commented - *"The bespoke equipment has worked well; we are particularly pleased with the multi-play unit with the carved oak leaves and owl. This unit, the 'mock' tree, mushroom seats and painted woodland animal and leaf markings really helped to set the scene for an enchanted forest theme encouraging imaginative play. We have received very positive feedback from local residents."*

URL Links:

Horsham District Council - www.horsham.gov.uk
Playsafe Playgrounds - www.playsafeplaygrounds.co.uk
Dylan Group - www.dylangroup.co.uk
Parkmarks Southern - www.parkmarks-southern.co.uk